

This Is YOUR GUIDE
To Exhibiting Orchids
at the
Orchid Society of Nova Scotia
Orchid Show

Compiled by Jean Allen-Ikeson

Edited by Margaret Blewett, Doug Hart
& Gail Schwarz

Technical and Taxonomic Assistance from
Peter Poot, Toronto AOS Judging Centre
Mark Stroube, Great Plains AOS Judging Center
With special thanks to Lowell Jacks for
providing the latest MA genera/intergenerics
class list that was then adapted for this guide

March 15, 2002

Welcome!!!

This is YOUR guide to exhibiting orchids at the annual Orchid Society of Nova Scotia orchid show. We are starting with the basics and assuming that you love orchids but are not ready to get an orchid taxonomy degree from Harvard! **Look at the Class List. If there are multiple classes for a genus or there is terminology that we think might be confusing, we have added notes at the end of each 'Alliance' group of classes.**

Let's assume that you have cleaned the leaves of your plants with a little lemon juice, checked for bugs, staked the flower 'spike' and removed any dead or brown leaves and pseudobulbs. Your plants are ready for the show. Now — in what class do they belong? So read through this manual—it is not nearly so scary as it looks! Your two beauties, Phalaenopsis Little Cutie and C. aurantiaca 'Solid Gold' HCC/AOS are ready to show! You can show them one of two ways after they are registered in the proper plant class (*see following for instructions*): in the OSNS group display or in your own exhibit (here is a way to win an extra ribbon: classes for all growers, commercial growers and even special ones for novices). See Appendix B for hints for arranging your own display and preparing your plants for show. You do not need 25 plants—two or three make a lovely display in a basket that you can arrange the night before!!!!

What's in an Orchid Name?

Look at your two plant names: Phalaenopsis Little Cutie & C. aurantiaca 'Solid Gold' HCC/AOS. Phalaenopsis and C., the abbreviation for Cattleya, are the first word in the name. This is the 'genus' ('family') in which taxonomists have placed your plant. It is like your last name. The next set of words, Little Cutie and aurantiaca, are like your first name. **Little Cutie you know is a hybrid because the name is capitalized.** On the other hand, **you know that aurantiaca is a naturally occurring species because the name is in lower case letters.** 'Solid Gold' is like a nickname—out of all the aurantiacas around, it has been given this special addition in quote marks to its name because it has been awarded a Highly Commended Certificate by AOS (American Orchid Society) judges. This is a special award that very few plants receive. Only this plant, divisions of it or identical offspring are allowed to use the name. It is sort of

like being given an honorary knighthood in Britain and having the 'Sir' added in front of your name. When there is a name on the end and there is no AOS, RHS (Royal Horticultural Society) or other national group initial behind it, it may be for two reasons. First, someone may have left it off the label and secondly, it may be used by breeders with just a name in quotes to denote a particular clone of the plant. Either way, it marks your plant as not being just any old aurantiaca, but a particular aurantiaca. However, for *entering* your plants in the show, we are only interested in the genus and species or hybrid name.

Now That I Know What the Name Means, What Class Does It Go In?

Let's start with Phalaenopsis Little Cutie. Look through the list of classes and find the 'Phalaenopsis Alliance' section. Where do you start? Because the second name of your plant Little Cutie is capitalized, you know it is a *hybrid*. So you can cross off Class 105 because it is for species. What you are looking for is the correct Phalaenopsis/Doritaenopsis "Hybrids" class. Now look at the flower. It has a white background with some soft pink on the petals. OK, what *exactly* is a petal, a sepal, a dorsal or the lip that you hear people discussing so passionately in regards to orchids. "Just look at the size of that pouch!" (They mean the lip on a Paphiopedilum). 'Have you ever seen such a flat dorsal!' Look at the drawings on page 4 and you will be in the 'picture' when it comes to orchid anatomy.

Back to Little Cutie. If you will read the description for class 111, you find 'blush' listed. Little Cutie has what is called a 'blush' of pink. Because the 'background colour' is white even though the pink blush extends nearly to the edge of the petals, white is still the dominant colour. So Little Cutie goes into class 111 Phalaenopsis/Doritaenopsis hybrids: white with spots, bars, blush or stripes or other markings.

Now for C.aurantiaca 'Solid Gold.' This is a species of the Cattleya family that has been recognized as a particularly good example of the species as indicated by the AOS award HCC/AOS. It is entered in Class 20 because it is a Cattleya *species*.

Let's try another plant. You bought a Podangis dactyloceras. Where does it belong? Go to Appendix A. This is a list of orchid genera and intergenerics with the name and the abbreviation. **If your label**

only has an abbreviation and you do not know the full name of genus and or to what class it belongs, Appendix A will tell you!

Intergeneric is a frequently used word in orchid language. It again refers to the parentage of a plant.

When two plants are crossed (the orchid term for sex between orchids), if they are each from a different genus (the first word in the name), then the resulting cross between them is known as an intergeneric. A hybrid can be between two different members of the same genus or between two different but related genera. So a hybrid can be, but does not have to be, an intergeneric. **Reference to Appendix A will give you the group of classes to which your plant may belong.**

Now you are an expert, let's try a harder one.

Oncidium Lava Burst. Right off the bat you know that it is a hybrid Oncidium because Lava Burst is capitalized. You are even so good at this now that you go straight to the Oncidium Alliance group on the show class list. Scan down to the hybrids (class 172). You will see the term "not including equitant (Tolumnea)". Now we are getting technical. Look at the end of the Oncidium Alliance classes and you will find notes for these. You will see that our friends the orchid classifiers (taxonomists) have divided the genus *Oncidium* into two genera: *Oncidium* and *Tolumnea*. The problem is that plants that now belong in *Tolumnea* will most likely still be labelled *Oncidium*. But back to Lava Burst, just look at it.

The fleshy short leaves without obvious pseudobulbs arranged in a fan are quite different from the long, thin, soft leaves that sit on the 'fat' pseudobulbs of your brilliant yellow 'dancing ladies.' Plants such as go into the class for *Tolumnea*, [which are commonly referred to as 'equitant oncidiums' (the name used to denote *Tolumnea*'s while they were still part of *Oncidium*)], species and hybrids, Class 180. See the drawing on page 4.

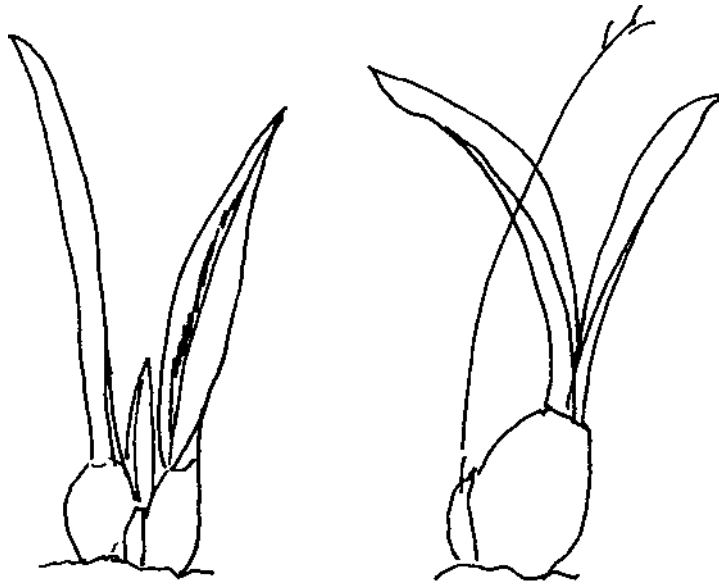
So to recap. You need to know whether your plant is a species or a hybrid. In most classes they are judged separately. You can tell by whether or not the first letter of the second name is in lower or upper case. Lower = species; Upper = hybrids. If you still are not sure because the entire label is in upper case, we can look up the plant name in the 'Wildcatt' orchid program at the show registration desk. **If there are multiple classes for a genus or there is terminology that we think might be confusing, we have added notes at the end of each 'Alliance' group of classes.**

Appendix A has a list of genus names and abbreviations. Using the full name or the

abbreviation of the first word in your orchid name, find the corresponding class number. If there is more than one number (class), then this large group has been subdivided and you will have to go to the Class Listing for more details. If there are multiple classes for a genus or there is terminology that we think might be confusing, we have added notes and sometimes even drawings at the end of each 'Alliance' group of classes. If you are still not sure, then take your plant to the registration desk at the show and say, I have a Phal. Big Bertha and I am not sure whether it goes in the class for pinks or whites. **Don't just hand the plant in and say "I don't know where it goes!!!!"** Take it as far as you can. There are no paid employees in an orchid society. We are ALL volunteers.

A final note: when you walk into the museum and see a wall full of beautiful blooms, you think WOW. Zoom in on the young plant with just a couple of flowers as well as the big specimen plant. We need them *all* to make a show. Novice growers or experienced growers, please make the effort. Enter your plant! It's your society!!!

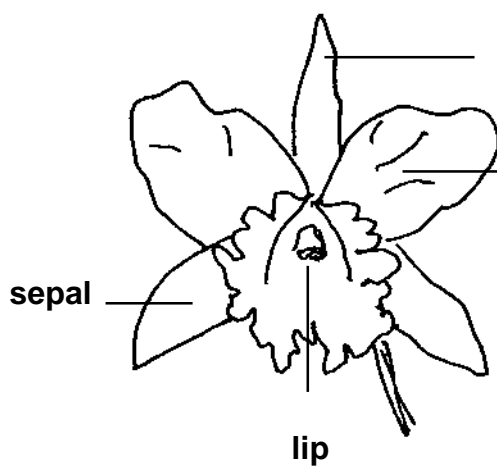
If you don't enter, you can't win!!



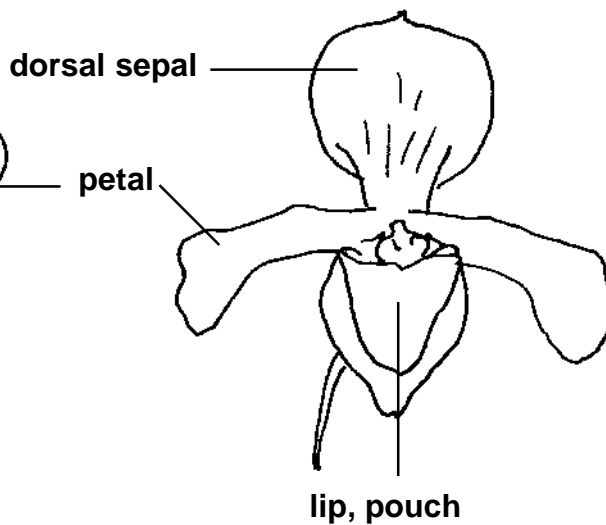
Examples of 'true' Oncidiums
 Note the large size, obvious pseudobulbs
 and leaves *not* arranged in a fan



**Equitant Oncidium
 (Tolumnia)**
 Note size difference and fan-
 shaped appearance on
 thick, fleshy leaves of
 Tolumnia



Cattleya type



Paphiopedilum

OSNS SHOW CLASSES

There are three groups of classes: one group for orchid exhibits, a second large group for the individual plants in your exhibit or the OSNS Group display, and a third for orchid photos, orchids arts & crafts, orchid collectibles and floral design/corsages that contain orchids. If you enter a display or 'basket' display in classes 1-19, you should still enter each orchid plant in the appropriate class for plants (classes 20 - 305). If you have a plant without a name that therefore cannot be judged in a 'plant class,' you can still place it in your display or the OSNS display. An unnamed plant can still add effect to a display.

Also note class 18 for an exhibit by a novice and class 305 for an orchid plant exhibited by a novice.

If there are multiple classes for a genus or there is terminology that we think might be confusing to novice exhibitors, we have added notes at the end of each 'Alliance' group of classes. There is a trophy awarded for Best in Show, and additional rosettes or prizes for Best Grown in Show, Best in Alliance, Best Exhibit by a Novice, etc.

Judges reserve the right to combine classes or create new ones where entry numbers warrant it.

A. CLASSES FOR ORCHID 'EXHIBITS'

Exhibits - Open

1. One to five orchid plants arranged for effect
2. Six to ten orchid plants arranged for effect
3. Eleven or more orchid plants arranged for effect
10. Educational exhibit that has not previously received an award. This class does not have to contain live orchids. Its purpose is to be educational and could be, for example, photographs of native orchids with a discussion of ecology and preservation techniques proposed by the exhibitor---or a demonstration set-up of flasking techniques for conserving endangered species---or an examination of a specific group of orchids, their classification and resulting hybrids
12. Cut orchid flower/sprays - arranged for effect (note: class 335 is for corsages and floral design with orchids in combination with or without other flowers--class 12 is for cut orchids only)

Exhibits - Commercial

14. Orchid Plants - any number arranged for effect
16. Cut orchid flower/sprays - arranged for effect (note: class 335 is for corsages and floral design with orchids in combination with or without other flowers--class 16 is for cut orchids only)

Exhibits - Novice and Junior (Novices and Juniors can enter classes 18-19 or classes 1-12 but not both)

18. Novice exhibit: orchid plants or cut orchid flowers/sprays arranged for effect
(*Novice in this class means any orchid society member who has not previously entered an exhibit/display alone or in a group other than the OSNS club display*)
19. Junior exhibit: orchid plants or cut orchid flowers/sprays arranged for effect (*Junior means any person 16 years or younger who is a member or with at least one parent a member of the OSNS. Flowers or plants in this category need not be grown by the entrant but the display must be arranged by the exhibitor.*)

B. CLASSES FOR ORCHID 'PLANTS'

Cattleya Alliance

20. Encyclia and Epidendrum species
22. Epidendrum including Encyclia: hybrids and intergenerics
26. Cattleya species
30. Allied Cattleya genera other than Cattleya: species including Laelia, Sophronitis, Broughtonia, Brassavola, Rhyncolaelia, etc. ('allied' meaning naturally occurring genera in the larger Cattleya-related 'superfamily,' e.g. Laelia, Schomburgkia, etc.)
38. Miniature Cattleya and allied genera species, hybrids and intergenerics. *Plants excluding the inflorescence should be 8" (20 cm) or less.*
40. Hybrids and intergenerics of Cattleya, other than the above: Pink/Lavender/Mauve/Purple
42. Hybrids and intergenerics of Cattleya, other than the above: White/ Semi-alba [*Semi-alba = white with a dark (such as magenta or purple) coloured area on the lip*]
44. Hybrids and intergenerics of Cattleya, other than the above: Yellow/Orange/Bronze
46. Hybrids and intergenerics of Cattleya, other than the above: Red/Red Shades
50. Hybrids and intergenerics of Cattleya, other than the above: Other colours *includes yellow with a red lip, green, 'true blue', or splash, spotted, patterned, etc. other than above*
55. Allied Cattleya genera other than Cattleya: hybrids and intergenerics other than the above (*not* crossed with Cattleya); for example, Schombolaelia or Brassiolaelia ('allied' meaning genera in the larger Cattleya related 'superfamily' such as Laelia, Schomburgkia, etc.)

Cypripedium Alliance

60. Paphiopedilum species - mottled-leaf species with normally a single flower on each inflorescence includes: armeniacum, bellatulum, concolor, delenatii, godefroyae, malipoense, micranthum, niveum, callosum and sukhakulii
62. Paphiopedilum species - Multifloras (solid green leaves, normally more than one flower per inflorescence appearing either simultaneously or sequentially), includes: adductum, glanduliferum, kolopakingii, philippinese, randsii, rothschildianum, sanderianum, stonei, supardii, haynaldianum, lowii, and parishii
64. Paphiopedilum species - other than above or with solid green leaves with normally a single flower per inflorescence - includes emersonii, insigne, spicerianum, hirsutissimum, fairrieianum, villosum, gratixianum, exul, and charlesworthii
66. Paphiopedilum primary and complex hybrids - Vinicolours (red wine colours)
68. Paphiopedilum primary hybrids (Cross of two species) - normally single flower per stem - any colour other than vinicolour (Paphiopedilum parentage may be looked up in 'Wildcatt' on show day)
70. Paphiopedilum primary hybrids - multifloras (normally more than one flower per inflorescence appearing either simultaneously or sequentially) - any colour other than vinicolour
72. Paphiopedilum complex hybrids (at least one parent is a hybrid) - any colour other than vinicolour
75. Phragmipedium species
77. Phragmipedium hybrids
79. Cypripedium Alliance species, hybrids and intergenerics other than above; for example, Cypripedium or Mexipedium

Vanda Alliance

80. Vanda species including Euanthe
82. Vanda hybrids and intergenerics (hybrids with Vanda in the pedigree)
88. Angraecum, Aerangis and allied genera - (such as Jumellea, Areanthes, Cyrtopus, Podangis, Diaphananthe) species, hybrids or intergenerics
92. Vanda Alliance species other than above such as Ascocentrum, Rhycostylis, Neofinetia, etc. *but excluding Phalaenopsis and Doritis (see classes 100-105 for these)*
96. Vanda Alliance hybrids and intergenerics other than above but excluding Phalaenopsis and Doritis (see classes 107-135), for example, Rhynchozentrum (hybrids related to but without Vanda in the pedigree)

Phalaenopsis Alliance

100. Doritis species, hybrids and intergenerics excluding hybrids with Phalaenopsis
105. Phalaenopsis species
107. Phalaenopsis/Doritaenopsis hybrids: multiflora,* any colour with or without spots, bars, blush or stripes
109. Phalaenopsis/Doritaenopsis hybrids: white, no markings or blush of another colour
110. Phalaenopsis/Doritaenopsis hybrids: white with coloured lip, no markings
111. Phalaenopsis/Doritaenopsis hybrids: white with spots, bars, blush, stripes or other markings
114. Phalaenopsis/Doritaenopsis hybrids: pink, no markings
115. Phalaenopsis/Doritaenopsis hybrids: pink with spots, bars, blush, stripes or other markings
118. Phalaenopsis/Doritaenopsis hybrids: red/purple, no markings
120. Phalaenopsis/Doritaenopsis hybrids: red/purple with spots, bars, blush, stripes or other markings
125. Phalaenopsis/Doritaenopsis hybrids: clear yellow, no markings
126. Phalaenopsis/Doritaenopsis hybrids: yellow with spots, bars, blush, stripes or other markings
129. Phalaenopsis/Doritaenopsis hybrids: any other colour, no markings
132. Phalaenopsis/Doritaenopsis hybrids: any other colour, with spots, bars, blush or stripes
135. Phalaenopsis/Doritaenopsis hybrids, colours or markings not specified above and species of allied genera, hybrids and intergenerics other than above (such as Cleisonopsis, Doriellaopsis, intergenerics of Phalaenopsis and Doritis with vandaceous orchids, etc)

- Notes:** a) "**multiflora**" for phalaenopsis only = miniature hybrids (e.g. crosses with equestris, Be Tris, Cassandra, etc.). Often these have branching inflorescences, although immature plants may not; **flowers less than 2 1/2" across**
- b) "**colour**" (e.g., white, pink, yellow, etc.) **is the background colour of the flower**

Oncidium Alliance

150. Brassia species, hybrids and intergenerics
155. Miltonia species (including Miltoniopsis)
158. Miltonia/Miltoniopsis hybrids and intergenerics other than the above
165. Odontoglossum (including Lemboglossum, Osmoglossum, Otoglossum, Ticoglossum and Rossioglossum) species, hybrids and intergenerics other than the above
168. Oncidium species, not including equitant* (Tolumnea)
172. Oncidium hybrids, not including equitant* (Tolumnea)
180. Oncidium equitant (Tolumnea) species and hybrids (includes Hispanella, Braasiella, Gundrunia, & Hispaniella.)
- * **Equitant** refers to orchids previously primarily classified as Oncidiums, and now referred to as genus Tolumnea.

They are easily recognized by their diminutive size, thick/fleshy leaves without obvious pseudobulbs arranged in a "fan." See drawing between the introduction and class list!

185. Oncidium intergenerics other than above

190. Allied Oncidium genera: species, hybrids and intergenerics other than above ('allied' meaning genera in the larger Oncidium-related 'superfamily' such as Ada, Aspasia, Cochlioda, Compactia, Psychopsis, etc.)

Cymbidium Alliance

200. Cymbidium species

202. Cymbidium hybrids - standard - any colour -flowers wider than 2 1/2"

204. Cymbidium hybrids - miniature - any colour - flowers narrower than 2 1/2" *including Chinese Cymbidium hybrids*

210. Allied Cymbidium genera other than Cymbidium: species, hybrids and intergenerics other than above ('allied': genera in the larger Cymbidium related 'superfamily' such as Ansellia, Cymbidiella, Grammatophyllum, etc.)

Dendrobium Alliance

220. Dendrobium species

225. Dendrobium hybrids and intergenerics

235. Allied Dendrobium genera: species, hybrids and intergenerics other than above includes Cadetia, Diplocaulobium, & Epigeneium

Miscellaneous Genera

240. Masdevallia, Dracula, & Dryadella species, hybrids and intergenerics

250. Pleurothallis Alliance species, hybrids and intergenerics other above (such as Restrepia)

260. Bulbophyllum, Cirrhopetalum and allied genera — species, hybrids and intergenerics

270. Lycaste subtribe including Lycaste, Anguloa, etc.--- species, hybrids and intergenerics

275. Maxillaria subtribe including Mormolyca: species, hybrids and intergenerics other than above

280. Zygopetalum subtribe including Zygopetalum, Bollea, Promenaea, Colchleanthes, etc.: species, hybrids and intergenerics other than above

290. Catasetum and allied genera: species, hybrids and intergenerics other than above ('allied' meaning genera in the larger Catasetum-related 'superfamily' such as Clowesia, Cycnoches, Dressleria, Mormodes, etc.)

295. **Miniature** species, hybrids and intergenerics, except Cattleya and allied genera as covered in class 38 ("miniature" in this class means a normally occurring diminutive plant in flower, not exceeding 6" (15 cm) in height, excluding inflorescence)

297. **Species not covered elsewhere**

299. **Hybrids and intergenerics not covered elsewhere**

305. **Novice Class:** plant owned and cultivated by an OSNS member of less than three years and not previously having won an award. "Of less than three years" applies to previous membership in other orchid societies or OSNS.

C. CLASSES FOR ORCHID - RELATED ITEMS or EXHIBITS

Orchid Art Exhibits * (all orchid art (except class 330) must have been created by the entrant)

310. Photography - mounted or framed - any size

315. Paintings, drawings, etchings, etc.

320. Ceramic, china, sculpture, jewelry and metal arts

325. Needlepoint, tapestry, embroidery

330. Art exhibits other than above (could include collectibles not created by exhibitor)

335. Corsages and floral design - orchids in combination with other flowers

Glossary

Alliance: group of orchid genera that are taxonomically similar and grouped together; crossing of two plants within an alliance to produce a hybrid is more likely to produce viable seed

Allied: genera that are part of a taxonomic alliance

Complex hybrid: as in Paphiopedilum, a cross containing at least one hybrid as a parent

Hybrid: a cross (mating) between two plants not of the same species; a hybrid may be a cross between two species, a species and a hybrid, two hybrids, or with parents from different genera

Intergeneric: a cross between two genera, for example, Sophrocattleya (Sc.), a cross between Sophronitis and Cattleya

Miniature: as in Cymbidiums, having flowers less than 2 1/2" across; as in Cattleyas, plants less than 8" excluding the inflorescence; as in "class 295," plants less than 6" excluding the inflorescence

Multifloral: as in Paphiopedilums, more than one flower per inflorescence (spike) occurring sequentially or simultaneously; as in Phalaenopsis, miniature hybrids (e.g. crosses with equestris, or/with Be Tris, Cassandra, etc.). Often these have branching inflorescences but immature plants may not; flowers less than 2 1/2"

Primary hybrid: as in Paphiopedilums, a cross between two species of Paphiopedilum

Species: a naturally occurring plant

Taxonomy: as in plants, a science that aims to identify all the kinds of plants and to arrange them into a scheme of classification that shows their relations

APPENDIX A: ORCHID SOCIETY OF NOVA SCOTIA ORCHID CLASSIFICATION FOR SHOWS

Name:	Abbreviation:	Class:			
			Angreoniella	(Angnla.)	88
			Anguloa	(Ang.)	270
			Angulocaste	(Angcst.)	270
			Anoectochilus	(Anct.)	116
			Anoectomaria	(Anctma.)	297
			Anota		92
			Ansellia	(Aslla.)	210
			Ansidium	(Asdm.)	210
			Antillanorchis		190
			Appendicula		296s,297h
Acacallis	(Accls.)	280	Aracampe	(Arcp.)	96
Acampe	(Acp.)	92	Arachnis	(Arach.)	92
Acanthephippium		296s,297h	Arachnocentron	(Act.)	96
Acinbreaa	(Acba.)	297	Arachnoglossum	(Arngm.)	96
Acineta	(Acn.)	296s,297h	Arachnoglottis	(Arngl.)	96
Acostaea		250	Arachnopsis	(Armps.)	96
Acriopsis		297	Arachnostylis	(Arnst.)	96
Acrochaene		260	Aranda	(Aranda)	96
Acrolophia		210	Aranthera	(Arnth.)	96
Ada	(Ada)	190	Arethusa	(Aret.)	296s,297h
Adacidium	(Adcm.)	185	Arizara	(Ariz.)	22
Adaglossum	(Adgm.)	165	Armodorum		92
Adapasia	(Adps.)	190	Arpophyllum		296s,297h
Adenocos		92	Artorima		30s, 55h
Adioda	(Ado.)	190	Arundina		296s,297h
Aerangaeris	(Arg.)	88	Ascandopsis	(Ascgps.)	96
Aerangis	(Aergs.)	88	Ascocenda	(Ascda.)	82
Aeranthes	(Aerth.)	92	Ascocentrum	(Asctm.)	92
Aerasconetia	(Aescta.)	96	Ascocleinetia	(Ascln.)	96
Aeridachnis	(Aerdns.)	96	Ascofinetia	(Ascf.)	96
Aerides	(Aer.)	92	Ascogastisia	(Agsta.)	96
Aeridisia	(Aersa.)	96	Ascoglossum	(Ascgm.)	92
Aeriditis	(Aerds.)	135	Ascoglottis	(Asgts.)	96
Aeridocentrum	(Aerctm.)	96	Asconopsis	(Ascps.)	135
Aeridochilus	(Aerchs.)	96	Ascorachnis	(Ascns.)	96
Aeridofinetia	(Aerf.)	96	Ascovandoritis	(Asvts.)	135
Aeridoglossum	(Aergm.)	96	Aspasia	(Asp.)	190
Aeridoglottis	(Aegts.)	96	Aspasia	(Aspsm.)	185
Aeridopsis	(Aerps.)	135	Aspidia	(Asid.)	190
Aeridovanda	(Aerdv.)	82	Aspoodonia	(Aspd.)	158
Aeridovansia	(Aervsa.)	82	Aspoglossum	(Aspgm.)	165
Aganathes	(Agths.)	280	Aulosepalum		296s,297h
Aganax	(Agx.)	280	Ayubara	(Ayb.)	96
Aganisia	(Agn.)	280	Bakerara	(Bak.)	150
Agasepalumj	(Agsp.)	280	Balaguerara	(Blga.)	22
Agrostophyllum		296s,297h	Baldwinara	(Bdwna.)	165
Aitkenara	(Aitk.)	280	Banfieldara	(Bnfd.)	150
Alamania		30s,55h	Baptacidium	(Btcm.)	185
Alangreatwoodara	(Agwa.)	280	Baptirettia	(Btta.)	190
Alexanderara	(Alxra.)	150	Baptistoglossum	(Bpgm.)	165
Aliceara	(Alcra.)	150	Baptistonia	(Bapt.)	190
Allenara	(Alna.)	22	Barangis	(Brgs.)	88
Alphonsoara	(Alph.)	82	Barbosaara	(Bbra.)	165
Altensteinia		296s,297h	Barbosella		250
Amblostoma	(Amb.)	30s, 55h	Bardendrum	(Bard.)	22
Amesiella		92	Barkeria	(Bark.)	30s, 55h
Amitostigma		296s,297h	Barkonitis	(Bknts.)	55h
Amparoa		190	Barombia	(Brmb.)	92
Anacamptis		296s,297h	Batemannia	(Btmna.)	280
Ancistrochilus		296s,297h	Bateostylis	(Btst.)	280
Andrewara	(Andw.)	82	Baumannara	(Bmnra.)	165
Angraecentrum	(Angctm.)	88	Beadlea		297
Angraecopsis		92	Beallara	(Billra.)	150
Angraecostylis	(Angsts.)	88	Beardara	(Bdra.)	135
Angraecum	(Angcm.)	88			
Angraecyrtanthes	(Ancyth.)	88			
Angraeorchis	(Angchs.)	88			
Angrangis	(Angrs.)	88			
Angranthellea	(Angtla.)	88			
Angranthes	(Angth.)	88			

Beclardia		92	Campylocentrum		92
Benzingia		280	Canium		296s,297h
Bifranisia	(Bfsa.)	280	Capanemia		190
Bifrenaria	(Bif.)	280	Carmichaelara	(Crml.)	55h
Bifrenidium	(Bifdm.)	210	Carpenterara	(Cpra.)	165
Bifreniella	(Bifla.)	280	Carterara	(Ctra.)	96
Biltonara	(Bilt.)	158	Casoara	(Csr.)	55h
Binotia		190	Catamodes	(Ctmds.)	290
Bishopara	(Bish.)	38-50	Catanoches	(Ctnchs.)	290
Blackara	(Blkr.)	158	Catasandra	(Ctsda.)	290
Bletia	(Bletia)	296s,297h	Catasetum	(Ctsm.)	290
Bletia-glottis	(Blgts.)	297	Cattkeria	(Cka.)	38-50h
Bletilla	(Ble.)	296s,297h	Cattleya	(C.)	26s, 38-50h
Bloomara	(Blma.)	55h	Cattleyopsis	(Ctps.)	30s, 55h
Bogardara	(Bgd.)	297	Cattleyopsisgoa	(Ctpga.)	55h
Bokchoonara	(Bkch.)	82	Cattleyopsistonia	(Ctpsta.)	55h
Bollea	(Bol.)	280	Cattleytonia	(Ctna.)	38-50
Bolleanthes	(Blth.)	280	Cattotes	(Ctts.)	38-50h
Bollopetalum	(Blptm.)	280	Caucaea		190
Bolusiella		92	Caularthron	(Clrthr.)	30s, 55h
Bonatea	(Bnt.)	297	Centrogenium		296s,297h
Bonniera		92	Centroglossa		296s,297h
Bothriochilus		296s,297h	Centropetalum		296s,297h
Bovornara	(Bov.)	82	Cephalanathera	(Ceph.)	296s,297h
Braasiella		180	Cephalantheropsis		296s,297h
Brachionidium		250	Cephalopactis	(Cpts.)	296s,297h
Brachtia		190	Ceratocentrum	(Crtn.)	296s,297h
Brachycorythis		296s,297h	Ceratochilus		92
Bradeara	(Brade.)	190	Ceratograecum	(Crgm.)	88
Brapasias	(Brap.)	150	Ceratostylus		235
Brassada	(Brsa.)	150	Chamaeangis		92
Brassavola	(B.)	30	Chamelophyton		250
Brassia	(Brs.)	150	Charlesworthara	(Cha.)	158
Brassidium	(Brsdm.)	150	Charlieara	(Charl.)	82
Brassioda	(Broda.)	150	Chaseella		260
Brassocattleya	(Bc.)	38-50h	Chaubardia		280
Brassochilus	(Brchs.)	150	Chaubardianthes	(Chbth.)	280
Brassodiadium	(Bdia.)	55h	Chaubardiella	(Chbl.)	280
Brassoepidendrum	(Bepi.)	22	Cheiradenia		280
Brassoepilaelia	(Bpl.)	22	Chelonistele		296s,297h
Brassokeria	(Brsk.)	55h	Chewara	(Chew.)	96
Brassolaelia	(Bl.)	55h	Chilocentrum	(Chctm.)	96
Brassolaeliocattleya	(Blc.)	38-50h	Chiloglottis		296s,297h
Brassomicra	(Bmc.)	55h	Chiloschista	(Chsch.)	92
Brassophronitis	(Bnts.)	55h	Chondranthes	(Cdths.)	280
Brassotonia	(Bstna.)	55h	Chondrobollea	(Chdb.)	280
Brillianteara	(Brida.)	150	Chondrorhyncha	(Chdrh.)	280
Bromheadia	(Brom.)	210	Christensonia		296s,297h
Broughtonia	(Bro.)	30	Christiara	(Chtra.)	82
Brownara	(Bwna.)	38-50	Chrysocynis		280
Brummittara	(Brum.)	165	Chuanyenara	(Chnya.)	96
Buiara	(Bui.)	22	Chuatianara	(Chtn.)	92
Bulbophyllum	(Bulb.)	260	Chyletia	(Chlt.)	297
Burkhardtara	(Bktra.)	165	Chysis	(Chy.)	296s,297h
Burkillara	(Burk.)	82	Chytroglossa		296s,297h
Burrageara	(Burr.)	158	Cirrhaea	(Cra.)	297
Cadetia		235	Cirrhoepa	(Chpa.)	297
Caladenia	(Calda.)	296s,297h	Cirrhopetalum	(Cirr.)	260
Calanthe	(Cal.)	296s,297h	Cirrhophyllum	(Crphm.)	260
Calassodia	(Calsd.)	297	Cischostalix	(Cstx.)	190
Caloarethusa	(Clts.)	297	Cischweinfia	(Cisch.)	190
Calochilus	(Clchs.)	296s,297h	Clarkeara	(Clka.)	38-50h
Calomitra	(Cmta.)	297	Cleisocalpa	(Clclp.)	96
Calopogon	(Cpg.)	296s,297h	Cleisocentrum	(Clctn.)	92
Caluera		250	Cleisodes	(Clsd.)	96
Calypso		296s,297h	Cleisofinetia	(Clfta.)	96
Calypstrochilum		92	Cleisomeria		92
Camortis		92	Cleisonopsis	(Clnps.)	135
Campbellara	(Cmpba.)	165	Cleisopera	(Clspa.)	96

Cleisoquetia	(Clq.)	96	Dendrochilum		296s,297h
Cleisostoma	(Cleis.)	92	Dendrogeria	(Denga.)	235
Cleisostylis	(Clsty.)	96	Dendrophylax	(Dlax.)	92
Cleisotheria	(Cltha.)	96	Derosaara	(Droa.)	150
Clowesia		290	Desmotrichium		210
Cochella	(Chla.)	280	Devereauxara	(Dvra.)	135
Cochleanthes	(Cnth.)	280	Diabroughtonia	(Diab.)	55h
Cochlecaste	(Cccst.)	270	Diacattleya	(Diac.)	38-50h
Cochlenia	(Cclna.)	280	Diacrium	(Diacm.)	30s, 55h
Cochleottia	(Colta.)	280	Diadenium		190
Cochlepetalum	(Ccptm.)	280	Diakeria	(Dkra.)	55h
Cochlesepalum	(Cos.)	280	Dialaelia	(Dial.)	55h
Cochlioda	(Cda.)	190	Dialaeliocattleya	(Dialc.)	38-50h
Coelia		296s,297h	Dialaeliopsis	(Dialps.)	55h
Coeliopsis		296s,297h	Diaphanangis	(Dpgs.)	88
Coelogyne	(Coel.)	297	Diaphananthe	(Dpthe.)	92
Colasepalum	(Clsm.)	280	Dichaea		280
Colaste	(Cste.)	270	Dillonara	(Dill.)	22
Colax	(Clx.)	280	Dimorphorchis		92
Coleottia	(Cta.)	280	Diothonaea		30s, 55h
Colmanara	(Colm.)	158	Diplocaulobium		235
Compartmentia	(Comp.)	190	Diplomeris		296s,297h
Condilago		296s,297h	Diplonopsis	(Dpnps.)	135
Conphronitis	(Conph.)	55h	Diploprora	(Dpra.)	92
Constantia		30s, 55h	Dipteranthus		296s,297h
Cookara	(Cook.)	38-50	Disa	(Disa)	296s,297h
Corallorhiza		296s,297h	Disperis		297
Coryanthes	(Crths.)	296s,297h	Diuris	(Diuris)	296s,297h
Corybas		296s,297h	Domindesmia	(Ddma.)	55h
Coryhopea	(Crhpa.)	297	Domingoa	(Dga.)	30s, 55h
Corymborkis		116	Domintonia	(Dmtna.)	55h
Cottonia		92	Dominyara	(Dmya.)	96
Cranichis		296s,297h	Domliopsis	(Dmlps.)	55h
Crawshayara	(Craw.)	150	Doncollinara	(Dclna.)	165
Crybe		296s,297h	Dorandopis	(Ddps.)	100
Cryptarrhena		296s,297h	Doreenhuntara	(Dhta.)	280
Cryptocentrum		275	Doricentrum	(Dctm.)	135
Cryptochilus		235	Doriella	(Drlla.)	100
Cryptophoranthus		250	Doriellaopsis	(Dlps.)	135
Cryptopus	(Crypt.)	92	Dorifinetia	(Dfta.)	100
Cryptostylis		296s,297h	Doriglossum	(Drgm.)	100
Crytoglottis		296s,297h	Dorisia	(Drsa.)	100
Cryptopodium	(Cyrp.)	210	Doristylis	(Dst.)	135
Crytorchis	(Cyrtes.)	92	Doritaenopsis	(Dtps.)	107-132
Cuitlauzina		190	Doritis	(Dor.)	100
Cyclopogon		296s,297h	Dorthera	(Dtha.)	96
Cynandra	(Cycda.)	210	Dossinia	(Doss.)	116
Cynoches	(Cyc.)	290	Dossinimaria	(Dsm.)	297
Cynodes	(Cycd.)	290	Downsara	(Dwsa.)	280
Cycsellia	(Cysl.)	210	Dracula	(Drac.)	240
Cymasetum	(Cymst.)	210	Dracuvallia	(Drvla.)	240
Cymbidiella	(Cymla.)	210	Dresslerara	(Dres.)	135
Cymbidium	(Cym.)	200s, 202-204h	Dresslerella		250
Cymphiella	(Cymph.)	210	Dressleria		290
Cynorkis	(Cyn.)	92	Dryadella		240
Cyperorchis	(Cporch.)	210	Drymoanthus	(Dry.)	92
Cypholoron		190	Duggerara	(Dugg.)	150
Cyripedium	(Cyp.)	79	Dunnara	(Dnna.)	55h
Cyrtellia	(Cyrtil.)	210	Dunningara	(Dngra.)	158
Cyrtidiorchis		275	Durutyara	(Dtya.)	280
Cyrtochilum		190	Dyakia		296s,297h
Dactylorhiza	(Dact.)	296s,297h	Earina		296s,297h
Darwinara	(Dar.)	82	Eastonara	(Eas.)	82
Debruyneara	(Dbra.)	82	Edeara	(Edr.)	135
Dactylodenia		297	Elearethusia	(Elsa.)	297
Degarmoara	(Dgmra.)	150	Elecalthusia	(Ecth.)	297
Deiselara	(Dsla.)	55h	Eleorchis	(Elo.)	296s,297h
Dekensara	(Dek.)	38-50h	Elepogon	(Elp.)	297
Dendrobium	(Den.)	220s, 225h	Elleanthus		296s,297h

Eliara	(Eliara)	22	Gastrorchis		296s,297h
Eltroplectis		296s,297h	Gastrosarcochilus	(Gsarco.)	96
Elythodia	(Etha.)	297	Gastrostoma	(Gstm.)	96
Elythranthera	(Elth.)	296s,297h	Gastrothera	(Gsrth.)	96
Embreea	(Emb.)	296s,297h	Gauntlettara	(Gtra.)	55h
Encyclia	(Encycl.)	20s, 22h	Geodorum		210
Engkhiamara	(Ekma.)	82	Georgeblackara	(Gbka.)	185
Ephemerantha	(Ephrem.)	235	Gerberara	(Gba.)	297
Epibarkiella	(Epbkl.)	22	Gigara	(Gigara)	190
Epiblastus		235	Gladysyeeara	(Glya.)	22
Epibrassonitis	(Epbns.)	22	Glanzara	(Glz.)	135
Epicatonia	(Epcn.)	22	Glossodia	(Gloss.)	296s,297h
Epicattleya	(Epc.)	22	Goffara	(Gfa.)	82
Epidella	(Epdla.)	22	Gohartia	(Ghta.)	190
Epidendrum	(Epi.)	20s, 22h	Gomada	(Gmda.)	190
Epidiacrium	(Epdcm.)	22	Gomesa	(Gom.)	190
Epigeneium		210	Gomettia	(Gmtta.)	190
Epiglottis	(Epgl.)	22	Gomochilus	(Gmch.)	190
Epigoa	(Epg.)	22	Gomoglossum	(Gmgm.)	165
Epilaelia	(Epl.)	22	Gongora	(Gga.)	296s,297h
Epilaeliocattleya	(Eplc.)	22	Goodaleara	(Gdra.)	150
Epilaeliopsis	(Eplps.)	22	Goodyera		116
Epileptovola	(Elva.)	22	Gottererara	(Gott.)	96
Epimicra	(Emc.)	22	Govenia		296s,297h
Epiopsis	(Eps.)	22	Grammangis		210
Epipactis	(Epcn.)	296s,297h	Grammatocymbidium	(Grcym.)	210
Epiphronitis	(Ephs.)	22	Grammatoheadia	(Grda.)	210
Epistoma	(Epstn.)	22	Grammatophyllum	(Gram.)	210
Epitonia	(Eptn.)	22	Grammatopodium	(Grtp.)	210
Eria		235	Graphiella	(Grpla.)	210
Eriopsis		210	Graphorkis	(Grks.)	210
Ernestara	(Entra.)	135	Graphorkis		210
Erycina	(Ercn.)	190	Grobya		210
Erydium	(Erdm.)	185	Gudrunia		180
Erythrodes		296s,297h	Gumara	(Gum.)	22
Esmeralda		92	Gymnadenia	(Gym.)	296s,297h
Estelara	(Esta.)	38-50h	Habenaria	(Hab.)	296s,297h
Euanthe	(Enth.)	80	Haemaria	(Haem.)	116
Euclades	(Eucl.)	210	Hagerara	(Hgra.)	135
Eulocymbidiella	(Eucmla.)	210	Hagsatera		30s, 55h
Eulophia	(Eupha.)	210	Hamelwellsara	(Hmwsa.)	280
Eulophidium		210	Hamiltonara	(Hmtn.)	150
Eulophiella	(Eul.)	210	Hanesara	(Han.)	96
Euryangis	(Eugs.)	88	Hapalochilus		296s,297h
Eurychone	(Echn.)	92	Haraella		92
Eurygraecum	(Eugcm.)	88	Hartara	(Hart.)	55h
Euryopsis	(Eunps.)	135	Hartwegia		30s
Eurystyles		296s,297h	Hasegawaara	(Hasgw.)	38-50
Fergusonara	(Ferg.)	38-50h	Hattoriara	(Hatt.)	22
Fernandezia		296s,297h	Hausermannara	(Haus.)	135
Fialaara	(Fia.)	38-50	Hawaiiara	(Haw.)	82
Flickingeria	(Flkga.)	235	Hawkesara	(Hwkra.)	22
Fordyceara	(Fdca.)	38-50	Hawkinsara	(Hksa.)	38-50
Forgetara	(Fgtra.)	150	Helcia	(Hlc.)	190
Freedara	(Fdra.)	96	Hellerorchis		190
Fronitaria		250	Helpilia	(Hpla.)	190
Fujioara	(Fjo.)	82	Herbertara	(Hbtr.)	38-50h
Fujiwarara	(Fjw.)	38-50h	Herschelia	(Hers.)	296s,297h
Galeandra	(Gal.)	210	Herschelianthe		296s,297h
Galeansellia	(Gsla.)	210	Herschelioidisa	(Hrds.)	297
Galeopetalum	(Gptm.)	280	Hetaeria		116
Galeorchis		296s,297h	Hexadesmia	(Hex.)	30s, 55h
Galeosepalum	(Glspm.)	280	Hexisea	(Hxsa.)	30s, 55h
Galeottia	(Glt.)	297	Higashiara	(Hgsh.)	38-50h
Gastisia	(Gsta.)	96	Hildaara	(Hdra.)	55h
Gastisocalpa	(Gscpa.)	96	Himoriara	(Hmra.)	135
Gastritis	(Gtts.)	100	Hintonella		296s,297h
Gastrochiloglottis	(Gchgl.)	96	Hippeophyllum		296s,297h
Gastrochilus	(Gchls.)	92	Hispanella		180

Holocentrum	(Hctm.)	96	Lancebirkara	(Lbka.)	280
Holcoglossum	(Holc.)	92	Lanium		30s, 55h
Holmara	(Hlm.)	185	Lankesterella		296s, 297h
Holothrix		296s, 297h	Lauara	(Lauara)	96
Holttumara	(Holt.)	82	Laycockara	(Lay.)	135
Homalopetalum		30s, 55h	Leaneyara	(Lnya.)	82
Hookerara	(Hook.)	38-50h	Leeara	(Leeara)	82
Houlletia	(Hlt.)	296s, 297h	Lemaireara	(Lemra.)	22
Houllora	(Hlra.)	297	Lemboglossum		190
Howeara	(Hwra.)	185	Leochilus	(Lchs.)	190
Hueylihara	(Hylra.)	96	Leocidium	(Lcdm.)	185
Hugofreedara	(Hgfda.)	135	Leocidmesa	(Lcmsa.)	185
Hummelara	(Humm.)	22	Leocidpasia	(Lcdpa.)	190
Huntleanthes	(Hnths.)	280	Lepanopsis	(Lep.)	250
Huntleya	(Hya.)	280	Lepanthes	(Lths.)	250
Hybochilus		190	Lepanthopsis	(Lpths.)	250
Hygrochilus	(Hygch.)	92	Leptodendrum	(Lptdm.)	22
Iacovielloara	(Icvi.)	22	Leptokeria	(Lptka.)	55h
Inobulbon		210	Leptolaelia	(Lptl.)	55h
Ione		260	Leptotes	(Lpt.)	30s, 55h
Ionettia	(Intta.)	190	Leptovola	(Lptv.)	55h
Ionocidium	(Incdm.)	185	Leslieara	(Lesl.)	22
Ionopsis	(Inps.)	190	Lewisara	(Lwsra.)	82
Irvingara	(Irv.)	96	Liaopsis	(Liaps.)	55h
Isabelia		30s, 55h	Lichtara	(Licht.)	135
Isaoara	(Isr.)	135	Liebmanara	(Lieb.)	185
Isochilus		30s, 55h	Lillochilus		210
Iwanagara	(Iwan.)	38-50h	Limara	(Lim.)	96
Izumiara	(Izma.)	22	Lindleyella		280
Jacqiniella		30s, 55h	Lioponia	(Lpna.)	55h
Jewellara	(Jwa.)	22	Liparis		296s, 297h
Jimenezara	(Jmzra.)	55h	Listrostachys		92
Joannara	(Jnna.)	82	Lockcidium	(Lkcdm.)	185
Johnkellyara	(Jkl.)	150	Lockcidmesa	(Lkda.)	185
Johnyeeara	(Jya.)	22	Lockhartia	(Lhta.)	190
Jumanthes	(Jmth.)	96	Lockochilettia	(Lkctta.)	190
Jumellea	(Jum.)	92	Lockochilus	(Lkchs.)	190
Kagawara	(Kgw.)	82	Lockogochilus	(Lkgch.)	190
Kalimpongia		296s, 297h	Lockopilia	(Lckp.)	190
Kalopternix		296s, 297h	Lockostalix	(Lkstx.)	190
Kanzerara	(Kza.)	280	Lophiaris		190
Kawamotoara	(Kwmta.)	22	Lowara	(Low.)	55h
Keferanthes	(Kefth.)	280	Lowsonara	(Lwnra.)	96
Kefersteinia	(Kefst.)	280	Luascotia	(Lscta.)	96
Keforea	(Kfr.)	280	Ludisia	(Lds.)	116
Kegeliella		296s, 297h	Lueddemannia		296s, 297h
Kingidium	(Kngdm.)	92	Luicentrum	(Lctm.)	96
Kingiella	(King.)	92	Luichilus	(Luic.)	96
Kippenara	(Kpa.)	135	Luinetia	(Lnta.)	96
Kirchara	(Kir.)	22	Luinopsis	(Lnps.)	135
Klehmara	(Klma.)	55h	Luisanda	(Lsnd.)	82
Knappara	(Knp.)	82	Luisia	(Lsa.)	92
Knudsonara	(Knud.)	82	Luistylis	(Lst.)	96
Koellensteinia		280	Luivanetia	(Lvta.)	82
Komkrisara	(Kom.)	96	Lutherara	(Luth.)	135
Konantzia		190	Lycaste	(Lyc.)	270
Kraussara	(Krsa.)	38-50	Lycasteria	(Lystr.)	270
Kriegerara	(Kgra.)	165	Lycomormium		296s, 297h
Lacaena		296s, 297h	Lymanara	(Lymra.)	96
Laelia	(L.)	30s, 55h	Lyonara	(Lyon.)	38-50h
Laeliocatonia	(Lctna.)	38-50	Maccolmara	(Mclm.)	280
Laeliocattkeria	(Lcka.)	38-50h	Maccoyara	(Mcyra.)	82
Laeliocattleya	(Lc.)	38-50h	Maccraithara	(Mcc.)	165
Laeliokeria	(Lkra.)	55h	Macekara	(Maka.)	135
Laeliopleya	(Lpya.)	38-50h	Maclellanara	(Mclna.)	150
Laeliopsis	(Lps.)	30s, 55h	Maclemoreara	(Mclmra.)	55h
Laelonia	(Lna.)	55h	Macodes	(Mac.)	116
Lagerara	(Lgra.)	165	Macomaria	(Mcmr.)	296s, 297h
Laipenchihara	(Lpca.)	135	Macradenia	(Mcdn.)	190

Macradesa	(Mcdsa.)	190	Neogardneria	(Ngda.)	280
Macroclinium		190	Neoglossum	(Neogm.)	96
Mailamaiaara	(Mai.)	38-50h	Neograecum	(Ngrcm.)	88
Malaxis		297	Neogyna		297
Malcolmcampbellara	(Mcba.)	92	Neokoehleria		190
Malleola		92	Neolauchea		30s, 55h
Masdevallia	(Masd.)	240	Neolehmannia		30s, 55h
Masonara	(Msna.)	280	Neomoorea		270
Mastigion		260	Neostylis	(Neost.)	96
Mastiphyllum		260	Neostylopsis	(NsIs.)	96
Matsudaara	(Msda.)	38-50h	Nephelaphyllum		296s,297h
Maunderara	(Mnda.)	158	Ngara	(Ngara)	96
Maxillacaste	(Mxcst.)	270	Nobleara	(Nlra.)	82
Maxillaria	(Max.)	275	Nonaara	(Non.)	96
Maxilobium	(Mxlb.)	275	Nornahamamotoara	(Nhmta.)	96
Maymoirara	(Mymra.)	22	Northenara	(Nrna.)	22
Mediocalcar		235	Norwoodara	(Nwda.)	150
Meechaiara	(Mchr.)	135	Notylettia	(NtIta.)	190
Megaclinium		296s,297h	Notylia	(Ntl.)	190
Meiracyllium	(Mrclm.)	30s, 55h	Notylidium	(Ntldm.)	185
Menadenium	(Mndnm.)	280	Notylopsis	(Ntlps.)	190
Mendoncella	(Mdcla.)	280	Oberonia		296s,297h
Mendosepalum	(Mdspl.)	280	Octomeria		250
Mesospinidium		190	Oddyara	(Oddy.)	280
Mexicoa		190	Odontioda	(Oda.)	165
Mexipedium		79	Odontobrassia	(Odbrs.)	150
Micholitzara	(Mchza.)	82	Odontocidium	(Odcdm.)	165
Microcoelia		92	Odontoglossum	(Odm.)	165
Micropera	(Micr.)	92	Odontonia	(Odna.)	158
Milpasia	(Mpsa.)	158	Odontopolia	(Odpla.)	165
Milpilia	(Mpla.)	158	Odontoretia	(Odrta.)	165
Miltada	(Mtad.)	158	Oecoclades	(Oecl.)	210
Miltadium	(Mtadm.)	158	Oeonia		92
Miltarettia	(Mtta.)	158	Oeoniella	(Oenla.)	92
Miltassia	(Mtssa.)	150	Oerstedella		30s, 55h
Miltistonia	(Mtst.)	190	Okaara	(Okr.)	82
Miltonia	(Milt.)	155s, 158h	Oliveriana		190
Miltonidium	(Mtdm.)	158	Oncandra	(Ora.)	190
Miltonioda	(Mtda.)	158	Oncidenia	(Oncna.)	185
Miltoniopsis	(Mltmps.)	155s, 158h	Oncidesa	(Oncsa.)	185
Mischobulbon		296s,297h	Oncidettia	(Onctta.)	185
Mizutara	(Miz.)	38-50h	Oncidiella	(Onclla.)	185
Moirara	(Moir.)	135	Oncidioda	(Oncda.)	185
Mokara	(Mkra.)	82	Oncidium	(Onc.)	168,180s; 172h,180h
Monkhouseara	(Mkhsa.)	280	Onlcidpilia	(Oncpa.)	185
Monnierara	(Monn.)	290	Onoara	(Onra.)	82
Monomeria		260	Ophidion		250
Moonara	(Mnra.)	96	Ophrys	(Oph.)	296s,297h
Mooreara	(Mora.)	38-50	Opsisanda	(Opsis.)	82
Mormodes	(Morm.)	290	Opsiscattleya	(Opsct.)	38-50h
Mormolyca	(Mlca.)	275	Opsistylis	(Opst.)	96
Morrisonara	(Mrsa.)	158	Orchiophrys	(Orcys.)	297
Moscosoara	(Mscra.)	22	Orchis	(Orchis)	296s,297h
Myoxanthus		296s,297h	Orchiserapias	(Orsps.)	297
Myrmecophila		30s	Orleansis		30s, 55h
Mystacidium	(Mycdm.)	92	Ornithidium		185
Nageliella	(Ngl.)	30s, 55h	Ornithocephalus	(Orcp.)	296s,297h
Nakagawaara	(Nkgwa.)	135	Ornithochilus		92
Nakamotoara	(Nak.)	82	Ornithocidium	(Orncm.)	185
Nanodes		30s, 55h	Ornithophora	(Orpha.)	190
Nashara	(Nash.)	55h	Osmentara	(Osmt.)	38-50
Naugleara	(Naug.)	96	Osmoglossum	(Osmgls.)	165
Neoaeristylis	(Nrst.)	96	Otaara	(Otr.)	38-50
Neobathiea	(Nbth.)	92	Otocolax	(Otcx.)	280
Neobatopus	(Nbps.)	96	Otoglossum	(Otgls.)	165
Neobenthamia		296s,297h	Otonisia	(Otnsa.)	280
Neocogniauxia		30s, 55h	Otosepalum	(Otspm.)	280
Neodryas		190	Otostylis	(Otst.)	280
Neofinetia	(Neof.)	92	Owensara	(Owsr.)	135

Pabstia	(Pab.)	280	Podochilus		296s,297h
Pageara	(Pga.)	82	Pogonia		296s,297h
Palermoara	(Pal.)	190	Polocoglottis		296s,297h
Palmerara	(Plmra.)	280	Polycynis	(Pcn.)	296s,297h
Palumbina		190	Polyotidium		190
Panczkara	(Pzka.)	55h	Polyphylax	(Ppx.)	96
Panisea		296s,297h	Polyradicion	(Prad.)	92
Pantapaara	(Pntp.)	82	Polyrrhiza		92
Paphinia	(Pna.)	296s,297h	Polystachya	(Pol.)	296s,297h
Paphiopedilum	(Paph.)	60-64s, 66-72h	Pomacentrum	(Pmctm.)	96
Papperitzia		190	Pomatisia	(Pmtsa.)	96
Parachilus	(Prcls.)	96	Pomatocalpa	(Pmcpa.)	92
Paradisanthus	(Pdsnth.)	280	Pomatochilus	(Pmtls.)	96
Paraphalaenopsis		92	Ponera		30s, 55h
Parasarcochilus	(Psarco.)	92	Ponerorchis		296s,297h
Parnataara	(Parn.)	135	Ponthieva		296s,297h
Paulara	(Plara.)	135	Pooleara	(Polra.)	135
Paulsenara	(Plsra.)	96	Porpax		235
Pecteilis	(Pctls.)	296s,297h	Porroglossum	(Prgm.)	250
Pegonia		296s,297h	Porrovallia	(Pvla.)	240a
Pehara	(Peh.)	82	Porterara	(Prta.)	82
Pelacentrum	(Plctm.)	96	Potinara	(Pot.)	38-50h
Pelachilus	(Pelcs.)	96	Prescottia		296s,297h
Pelastylis	(Pelst.)	96	Priceara	(Pri.)	270
Pelatantheria	(Pthia.)	92	Prolax	(Prx.)	280
Pelatoritis	(Pltrs.)	100	Promellia	(Pmla.)	210
Pelexia		296s,297h	Promenaea	(Prom.)	280
Pepeara	(Ppa.)	135	Promenanthes	(Prths.)	280
Peristeranthus	(Perths.)	92	Promosepalum	(Prsm.)	280
Peristerchilus	(Prschs.)	96	Propetalum	(Pptm.)	280
Peristeria		296s,297h	Pseuderia		210
Perreiraara	(Prra.)	82	Pseudolaelia		30s, 55h
Pescarhyncha		280	Psychilis		296s,297h
Pescatobollea	(Psbol.)	280	Psychopsiella		190
Pescatorea	(Pes.)	280	Psychopsis	(Psychp.)	190
Pescawarrea	(Psw.)	280	Psymorchis		190
Pescenia	(Pesc.)	280	Pteroceras	(Ptrcrs.)	92
Pescorantes	(Psnth.)	280	Pterostemma		190
Pettitara	(Pett.)	150	Pterostylis	(Ptst.)	296s,297h
Phaiocalanthe	(Phcal.)	297	Quekettia		190
Phaiocymbidium	(Phcym.)	210	Raganara	(Rgn.)	82
Phaius	(Phaius)	296s,297h	Ramasamyara	(Rmsya.)	82
Phalaenopsis	(Phal.)	105s, 107-132h	Rangaeris	(Rgs.)	88
Phalaerianda	(Phda.)	135	Recchara	(Recc.)	38-50h
Phalandopis	(Phdps.)	135	Rehfieldara	(Rfda.)	165
Phalanetia	(Phnta.)	135	Renades	(Rnds.)	96
Phaliella	(Phlla.)	135	Renafinanda	(Rfnda.)	82
Phillipsara	(Phill.)	280	Renaglottis	(Rngl.)	96
Pholidota		296s,297h	Renacentrum	(Rnctm.)	96
Phragmipaphium	(Phrphm.)	77	Renanda		82
Phragmipedium	(Phrag.)	75s, 77h	Renanetia	(Rnet.)	96
Phreatia		296s,297h	Renanopsis	(Rnps.)	96
Phymatidium		296s,297h	Renanstylis	(Rnst.)	96
Physosiphon		250	Renanatanda	(Rntda.)	82
Piperia		296s,297h	Renanthera	(Ren.)	92
Platanthera		296s,297h	Renantherella	(Rnntha.)	92
Platyclinis		296s,297h	Renanthoglossum	(Rngm.)	96
Platyrhiza		296s,297h	Renanthopsis	(Rnthps.)	135
Platystele		250	Renaparanopsis		96
Plectochilus	(Plchs.)	96	Restrepia	(Rstp.)	250
Plectorrhiza	(Plrhz.)	92	Restrepiella		250
Plectrelgraecum	(Plgcm.)	88	Restrepiopsis		250
Plectrelminthus	(Plmths.)	92	Rhinerrhiza	(Rhin.)	92
Plectrophora		190	Rhinochilus	(Rhincs.)	96
Pleione	(Pln.)	296s,297h	Rhynchocentrum	(Rhctm.)	96
Pleurobotryum		250	Rhynchoelaelia	(Rhynch.)	30s, 55h
Pleurothallis	(Pths.)	250	Rhynchonopsis	(Rhnp.)	135
Pleurothallopsis		250	Rhynchorides	(Rhlds.)	96
Podangis		92	Rhynchosele		296s,297h

Rhynchostylis	(Rhy.)	92	Scaphyglottis	(Scgl.)	30s, 55h
Rhynchovanda	(Rhv.)	82	Scelochilus		190
Rhyndoropsis	(Rhdsps.)	135	Schafferara	(Schfa.)	150
Rhytionanthos		260	Schilligerara	(Slga.)	158
Richardmizutaara	(Rcmza.)	135	Schlimmia		296s,297h
Richardsonara	(Rchna.)	165	Schoenorchis		92
Ridleyara	(Ridl.)	82	Schombavola	(Smbv.)	55h
Rittershausenara	(Rthn.)	280	Schombocatonia	(Smbcna.)	38-50
Robifinetia	(Rbf.)	96	Schombocattleya	(Smbc.)	38-50h
Robinara	(Rbnra.)	82	Schombodiacrium	(Smbdcm.)	55h
Robiqueta	(Rbq.)	92	Schomboepidendrum	(Smbep.)	22
Robostylis	(Rbst.)	96	Schombolaelia	(Sml.)	55h
Roccaforteara	(Rcfta.)	150	Schombolaeliopsis	(Smlp.)	55h
Rodrassia	(Rdssa.)	150	Schombonia	(Smbna.)	55h
Rodrettia	(Rdtt.)	190	Schombonitis	(Smbts.)	55h
Rodrettiopsis	(Rdtps.)	190	Schomburgkia	(Schom.)	30s, 55h
Rodrichilus	(Rdchs.)	190	Scottara	(Sctt.)	96
Rodricidium	(Rdcm.)	185	Scullyara	(Scu.)	22
Rodridenia	(Rden.)	190	Scuticaria		275
Rodriglossum	(Rdgm.)	165	Seaheia	(Sxa.)	55h
Rodriguezia	(Rdza.)	190	Sedirea	(Sdr.)	92
Rodriguezella	(Rdzlla.)	190	Segeara	(Sgra.)	158
Rodriguezopsis		190	Selenipedium		79
Rodriopsis	(Rodps.)	190	Senghasara	(Sngs.)	165
Rodritonia	(Rdtna.)	158	Serapias	(Srps.)	296s,297h
Rohriara	(Rhla.)	150	Sevedrinara	(Sev.)	55h
Rolfeara	(Rolf.)	38-50h	Sheehanara	(Shhn.)	296s,297h
Ronnyara	(Rnya.)	82	Shigeuraara	(Shgra.)	82
Rosakirschara	(Rskra.)	96	Shipmanara	(Shipm.)	55h
Roseara	(Rsra.)	135	Shiveara	(Shva.)	150
Rossioglossum		165	Sidranara	(Sidr.)	135
Rothara	(Roth.)	22	Siegeristara	(Sgrt.)	260
Rotorara	(Rtra.)	280	Sievekingia		296s,297h
Rudolfiella	(Rud.)	280	Sigmacidium	(Sgdm.)	185
Rumrillara	(Rlla.)	96	Sigmatostalix	(Sgm.)	190
Ruppara	(Rppa.)	165	Silpapasertara	(Silpa.)	96
Rusbyella		190	Sladeara	(Slad.)	135
Saccolabiopsis		92	Slolzia		235
Saccolabium	(Saccm.)	92	Smitinandia		92
Sagarikara	(Sgka.)	96	Sobennigraecum	(Sbgcm.)	88
Sakabaara	(Skba.)	38-50	Sobennikoffia	(Sbk.)	92
Sallyyeeara	(Sya.)	22	Sobralia	(Sob.)	296s,297h
Salpistele		250	Solenidiopsis		296s,297h
Sanderara	(Sand.)	150	Solenidium		190
Sanderella		190	Sophrocattleya	(Sc.)	38-50h
Sanjumeara	(Sjma.)	82	Sophrolaelia	(Sl.)	55h
Saplalaaara	(Spla.)	82	Sophrolaeliocattleya	(Slc.)	38-50h
Sappanara	(Sapp.)	135	Sophronitella	(Sphrnt.)	30s, 55h
Saraceneella		296s,297h	Sophronitis	(Soph.)	30s, 55h
Sarcanthus	(Snths.)	92	Soterosanthus		296s,297h
Sarcocentrum	(Srcm.)	96	Spathoglottis	(Spa.)	296s,297h
Sarcochilus	(Sarco.)	92	Sphyrarhynchus		96
Sarcoglottis	(Srgt.)	296s,297h	Sphyrastylis		296s,297h
Sarcoglyphis		296s,297h	Spiranthes		296s,297h
Sarcomoanthus	(Sran.)	96	Srisukara	(Srka.)	96
Sarconopsis	(Srnps.)	135	Staalara	(Staal.)	55h
Sarcophyton		92	Stacyara	(Stac.)	22
Sarcopodium		210	Stamariaara	(Stmra.)	135
Sarcostoma		235	Stanfieldara	(Sfdra.)	22
Sarcothera	(Srth.)	96	Stangora	(Stga.)	297
Sarcovanda	(Srv.)	82	Stanhocycnis	(Stncn.)	297
Saridestylis	(Srdts.)	96	Stanhopea	(Stan.)	296s,297h
Sarpariza	(Spza.)	92	Staurochilus	(Stchls.)	92
Sartylis	(Srts.)	96	Stauropsis	(Strpss.)	92
Satyrium	(Satm.)	296s,297h	Stelia		250
Sauledaara	(Sdra.)	150	Stelis		250
Saundersia		190	Stellamizutaara	(Stlma.)	38-50
Sauroglossum		296s,297h	Stellilabium		296s,297h
Scaphosepalum		250			

Stenia	(Stenia)	280	Vanda	(V.)	80s, 82h
Steniella	(Stla.)	280	Vandachnis	(Vchns.)	82
Stenocoryne		280	Vandaenopsis	(Vdnps.)	135
Stenoglottis	(Sngl.)	296s,297h	Vandaerantes	(Vths.)	82
Stenorrhynchus	(Strs.)	296s,297h	Vandewegheara	(Vwga.)	135
Stenosarcos	(Stsc.)	297	Vandofinetia	(Vf.)	82
Stephenara	(Sph.)	280	Vandofinides	(Vfds.)	82
Stereochilus		92	Vandopsides	(Vdpsd.)	96
Stewartara	(Stwt.)	165	Vandopsis	(Vdps.)	92
Stolzia		296s,297h	Vandoritis	(Vdts.)	100
Summerhayesia		92	Vanglossum	(Vgm.)	82
Susanperreiraara	(Sprra.)	38-50	Vanilla		296s,297h
Sutingara	(Sut.)	135	Vascostylis	(Vasco.)	82
Symmonsara	(Syma.)	22	Vaughnara	(Vnra.)	22
Symphyglossum		165	Vejarutara	(Vja.)	38-50
Systeloglossum		165	Viraphandhuara	(Vpda.)	82
Taeniophyllum		92	Vuylstekeara	(Vuyl.)	158
Tainia		296s,297h	Waibengara	(Wai.)	135
Tanara	(Tanara)	82	Wailaiara	(Wlra.)	82
Telipogon		296s,297h	Waironara	(Wrna.)	82
Teohara	(Thra.)	82	Warmingia		190
Tetracattleya	(Tct.)	38-50h	Warneara	(Wnra.)	185
Tetradiacrium	(Ttdm.)	55h	Warrea	(Wra.)	280
Tetrakeria	(Ttk.)	55h	Warreella		280
Tetraliopsis	(Ttps.)	55h	Warscewiczella	(Wrscwc.)	280
Tetramicra	(Tma.)	30s, 55h	Westara	(Wsta.)	38-50
Tetratonia	(Ttna.)	55h	Wilburchangara	(Wbchg.)	22
Thelasis		297	Wilkinsara	(Wknsra.)	82
Thelymitra	(Thel.)	296s,297h	Wiliaara	(Wlm.)	280
Theocosteale		296s,297h	Wilsonara	(Wils.)	165
Thesaera	(Thsra.)	88	Wingfieldara	(Wgfa.)	150
Thompsonara	(Thmpa.)	210	Withnerara	(With.)	158
Thrixspermum		92	Wooara	(Woo.)	22
Thunia	(Thu.)	296s,297h	Woodwardara	(Wdwa.)	280
Ticoglossum		165	Xerriara	(Xra.)	96
Tipularia		296s,297h	Xylobium	(Xyl.)	280
Tolumnia		180	Yahiroara	(Yhra.)	22
Trautara	(Trta.)	135	Yamadara	(Yam.)	22
Trevorara	(Trev.)	135	Yapara	(Yap.)	135
Trias	(Trias)	260	Yeeara	(Yra.)	22
Triaspetalum	(Tspt.)	260	Yeepengara	(Ypga.)	135
Triasphyllum	(Tphm.)	260	Yoneoara	(Ynra.)	96
Trichocentrum	(Trctm.)	190	Yonezawaara	(Yzwr.)	82
Trichoceros		296s,297h	Ypsilopus		96
Trichocidium	(Trcdm.)	185	Yusofara	(Ysfra.)	82
Trichoglottis	(Trgl.)	92	Zeuxine		116
Trichonopsis	(Trmps.)	135	Zootrophion		250
Trichopilia	(Trpla.)	190	Zygobatemannia	(Zbm.)	280
Trichopsis	(Trcps.)	96	Zygocaste	(Zcst.)	270
Trichosalpinx		250	Zygocella		297
Trichostylis	(Trst.)	96	Zygocolax	(Zcx.)	280
Trichotisia		296s,297h	Zygodisanthus	(Zdsnth.)	280
Trichovanda	(Trcv.)	82	Zygolum	(Zglm.)	280
Tridactyle		92	Zygoneria	(Zga.)	280
Trigolyca	(Trgca.)	280	Zygonisia	(Zns.)	280
Trigonidium	(Trgdm.)	275	Zygopetalum	(Z.)	280
Trisetella		250	Zygorhyncha	(Zcha.)	280
Trisuloara	(Tsla.)	22	Zygosepalum	(Zspm.)	280
Trizeuxis		190	Zygostates		296s,297h
Tubaecum	(Tbcm.)	88	Zygostylis	(Zsts.)	280
Tuberolabium	(Tblm.)	92	Zygotorea	(Zgt.)	280
Tuckerara	(Tuck.)	22	Zygowarrea	(Zwr.)	280
Tuescheria		280	Adapted by Jean Allen-Ikeson for the OSNS from the MidAmerica Classification System prepared by Lowell Jacks		
Turnbowara	(Tbwa.)	38-50			
Uncifera		96			
Uptonara	(Upta.)	135			
Vacherotara	(Vach.)	22			
Vanalstyneara	(Vnsta.)	158			
Vancampe	(Vcp.)	82			

APPENDIX B: PREPARING YOUR PLANTS FOR EXHIBITION

When the judge looks at your plant and/or display, you want it to make the best possible impression on the them. Here are a few tricks of the trade:

The plant should be well groomed. Although in most cases it is the flower quality that is being judged, the condition of the plant does affect the judge's subconscious evaluation of the flowers, and in an exhibit, it is of major importance on the exhibit score.

Remove all dead leaves, dried flower sheathes and dead plant material. Cut the tips off that have dried or turned brown. Remove any weeds such as oxalis that grow in the plant medium. Put a covering of new medium on the top if you think it would improve the appearance. Check for and remove insects and carefully spray if necessary.

Clean the leaves with your favourite mixture, such as lemon juice, milk, etc or try this one: 1 cup water, 1 T powdered milk, 1 t. liquid Palmolive. Wipe on with cotton or a soft paper towel and dry with a clean piece. To remove lime deposits or resistant water spotting, try 1 cup water with 2 T vinegar before you shine with the above mixture. Be careful to not let any of these items get on your flowers. Inspect flowers for bits of foreign matter, potting medium, webs, etc. and try gently blowing it off. Staking will often improve your presentation. There are two kinds: one for travel and one for exhibiting. For travel, a more elaborate staking of the flowers and, if necessary, the plants with special attention paid to the flowers so that they do not bump or rub anything.

Sometimes a little light confetti will help protect them. Remove the heavier stakes that you used for travelling and check the position of the lighter stakes. It is much better to start staking as the inflorescence grows rather than to wait until the last minute. Paphiopedilums should be staked so that the flowers hang normally, not facing heavenward. Make sure the wire, bamboo, string, twist ties or whatever you use does not detract from or overwhelm the plant. They should appear as subtle as possible.

If you are placing your plant in the OSNS Group Display, it is a good idea to push an extra tag down into the pot with your name on it to help identify it at the end of the show. If you are entering your own display, you may want to make your own labels hot glued or taped onto thin wooden stakes. Make sure they are clear, legible and of a colour that does not distract from the display. Avoid white tombstones dancing across your exhibit.

You may want to prepare your display at home in a basket with sheet moss, spanish moss, etc. covering the areas between the pots so that it looks like a basket from the woods. You can bulk the open spots between the pots with newspaper and then camouflage them with the moss, etc. You may add small 'greenery' such as ferns so long as they do not compete with the orchids for attention. When you are at the show, look around at the other exhibits for ideas for next year.

The night before the show, check through the show class guide to match your plants with the appropriate class and fill in the entry forms provided in the OSNS newsletter. You will receive an exhibitor number and your plant will receive a plant number at the registration table.

A final note: while more flowers on a plant are usually better, more judging points are usually given to the *quality* of the flowers. Just because your plant is a young one does not mean that it will not win a first place ribbon! As a general rule, the more flowering plants at the show, the better the show. So bring your plants or send them with someone else!!! Just get them to the show on set-up day.